

BCCS-4		BCS-4		BPCS-4		BPS-4	
BCCS-6		BCS-6		BPCS-6		BPS-6	
BCCS-8		BCS-8		BPCS-8		BPS-8	

Cubetas GN incluidas en el precio - GN containers included in price

Características técnicas - Technical data

ref.	largo length (mm)	alto height (mm)	fondo depth (mm)	base platos dish area (mm)	GN 1/3-40	potencia frig. frig. power (W)	consumo consumption (W)	tensión monofásica single phase voltage	refrigerante coolant
BCCS-4	1050	255	410		4	160	260	230 V - 50 Hz	R-134a
BCCS-6	1400	255	410		6	190	280	230 V - 50 Hz	R-134a
BCCS-8	1755	255	410		8	210	300	230 V - 50 Hz	R-134a
BCS-4	1050	255	410	300 x 675		160	260	230 V - 50 Hz	R-134a
BCS-6	1400	255	410	300 x 1030		190	280	230 V - 50 Hz	R-134a
BCS-8	1755	255	410	300 x 1380		210	300	230 V - 50 Hz	R-134a
BPCS-4	1050	315	410		4	160	260	230 V - 50 Hz	R-134a
BPCS-6	1400	315	410		6	190	280	230 V - 50 Hz	R-134a
BPCS-8	1775	315	410		8	210	300	230 V - 50 Hz	R-134a
BPS-4	1050	315	410	300 x 675		160	260	230 V - 50 Hz	R-134a
BPS-6	1400	315	415	300 x 1030		190	280	230 V - 50 Hz	R-134a
BPS-8	1775	315	415	300 x 1380		210	300	230 V - 50 Hz	R-134a

Características técnicas y constructivas sujetas a variación sin previo aviso.

We reserve the right to change specifications without prior notice.

- Exterior en acero inox AISI-304 18/10
- Fondo interior embutido en acero inox AISI 304 18/10
- Cristal curvo o plano templado y securizado
- Iluminación por LEDS
- Puertas transparentes correderas
- Aislamiento de poliuretano inyectado, densidad 40 Kg/m³, cero efectos ODP y GWP
- Reguladores de altura
- Iluminación interior
- Unidad condensadora ventilada
- Ajuste de temperatura y descarche por control electrónico digital
- Temperatura de trabajo 0° +5° a 32°C de ambiente

- AISI-304 18/10 stainless steel exterior
- AISI-304 18/10 stainless steel stamped bottom
- Toughened safety glass
- LED lighting
- Transparent sliding doors
- 40 Kg/m³ density polyurethane insulation, zero ODP and GWP
- Adjustable supports
- Interior lighting
- Fan assisted condenser unit
- Temperature and defrost sets by digital electronic control
- Operating temperature 0° +5° , 32°C ambient

BCCS - BPCS Bandeja interior embutida, preparada para cubetas GN1/3-40 (incluidas)

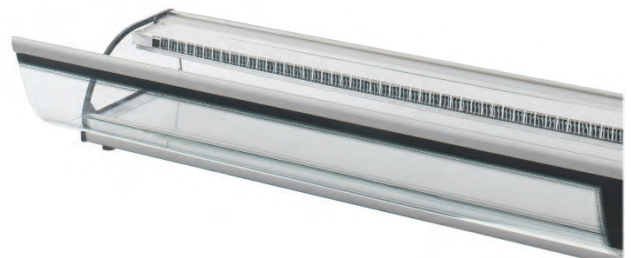
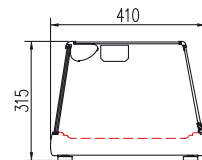
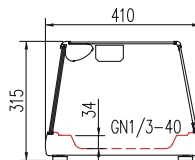
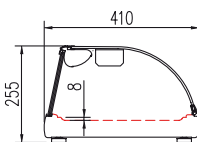
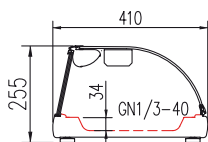
BCCS - BPCS, stamped steel bottom, GN 1/3-40 containers capacity (included)

BCS - BPS Bandeja interior embutida, preparada para platos (no incluidos)

BCS - BPS stamped steel (not GN capacity)

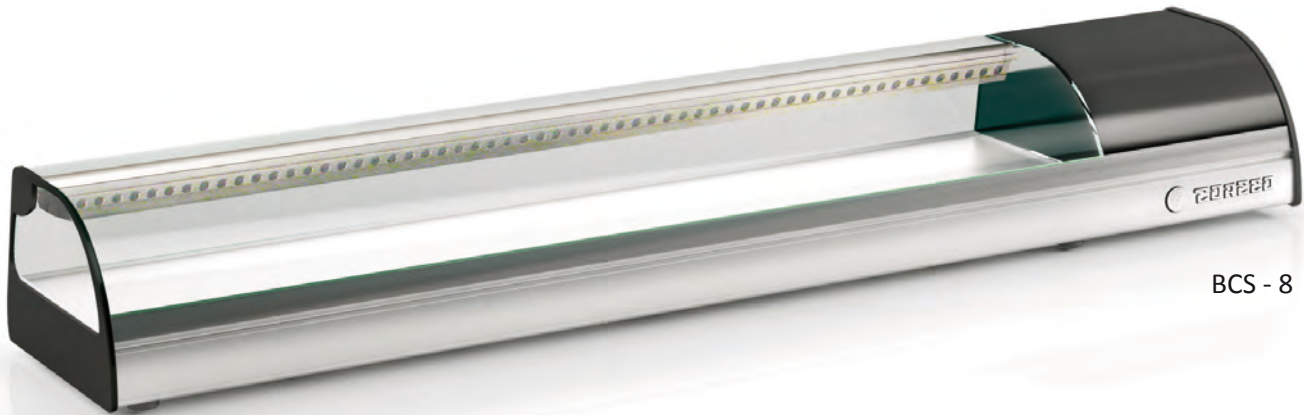
230v 60Hz / 115v 60Hz

consultar - consult



Bandeja fria sushi
Sushi cooler display

all photos must be considered as a reference - fotografías no contractuales



BCS - 8

