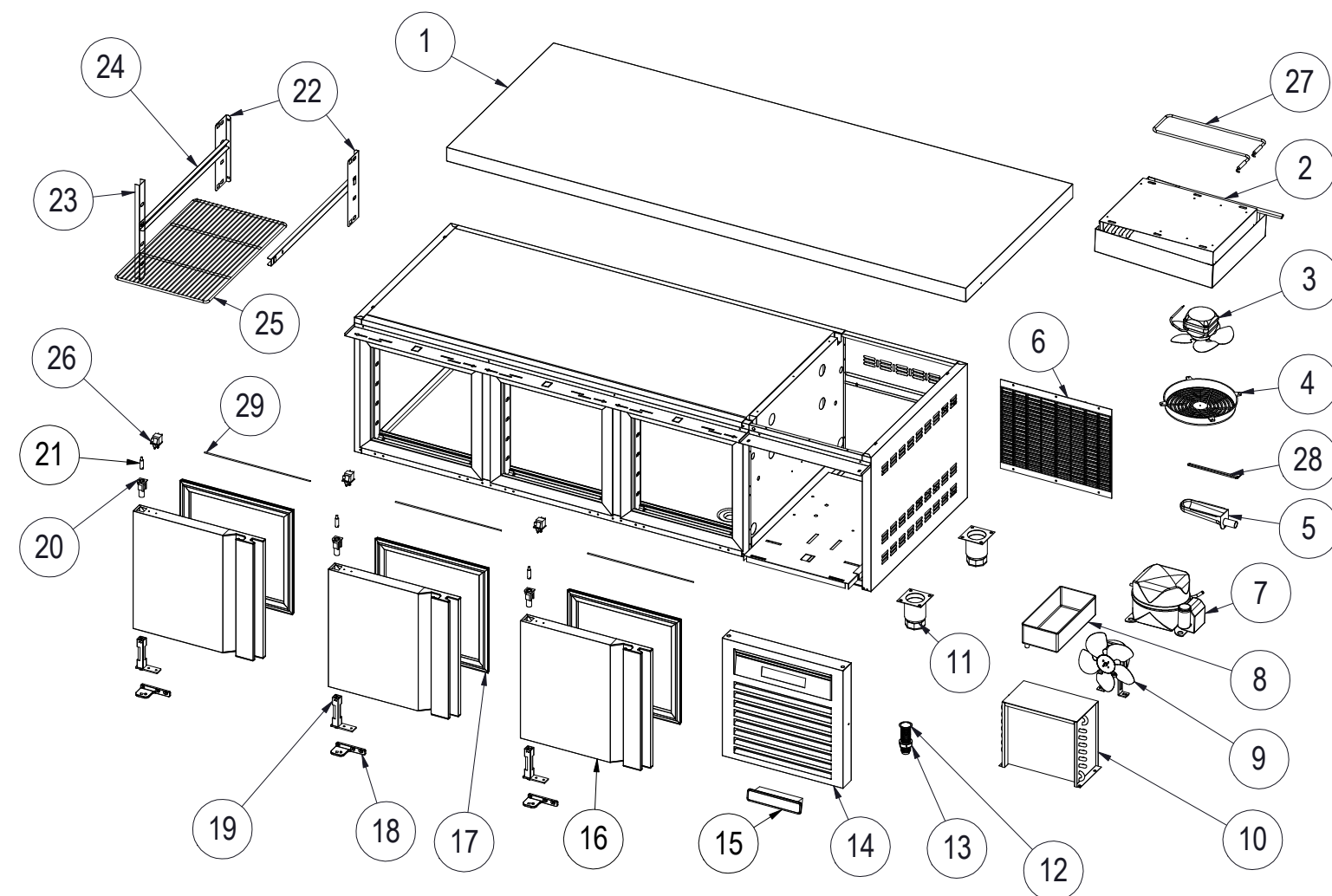


| Nº | DESCRIPCIÓN | DESCRIPTION | MCB-135 | MCB-180 | MCB-225 |
|----|--------------------------------|-----------------------------|------------|------------|------------|
| 1 | ENCIMERA | WORKTOP | M181010612 | M181010613 | M181010614 |
| 2 | EVAPORADOR MCB | EVAPORATOR MCB | 6029010139 | 6029010139 | 6029010251 |
| 3 | VENTILADOR EVAPORADOR | EVAPORATOR FAN | 6021050116 | 6021050116 | 6021050147 |
| | ASPA VENT. DEL EVAP. | EVAPORATOR FAN BLADE | 6021050073 | 6021050073 | 6021050094 |
| 4 | REJILLA VENTILADOR | FAN GRILLE | 6003010475 | 6003010475 | 6003010475 |
| 5 | DESAGUE CANALIZADOR | DRAIN CANAL | 6003010192 | 6003010192 | 6003010192 |
| 6 | REJILLA TRASERA MOTOR | REAR VENTILATION GRILLE | 6003010181 | 6003010181 | 6003010181 |
| 7 | COMPRESOR MCB | COMPRESSOR MCB | 6021010265 | 6021010265 | 6021010245 |
| 8 | BANDEJA EVAP. AUTOM. | AUTOMATIC EVAP. TRAY | 6003010023 | 6003010023 | 6003010023 |
| 9 | VENTILADOR CONDENSADOR MCB | CONDENSER FAN MCB | 6021050153 | 6021050153 | 6021050151 |
| | ASPA VENT. DEL COND. | CONDENSER FAN BLADE | 6021050073 | 6021050073 | 6021050094 |
| | PATA VENT. DEL COND. | CONDENSER FAN SUPPORT | 6021050101 | 6021050101 | 6021050125 |
| 10 | CONDENSADOR MCB | CONDENSER MCB | 6029020123 | 6029020123 | 6029020125 |
| 11 | PATA REGULABLE | ADJUSTABLE FEET | 6007050079 | 6007050079 | 6007050079 |
| 12 | TAPÓN DESAGUE 3/4 | DRAIN CAP 3/4 | 6003010262 | 6003010262 | 6003010262 |
| 13 | DESAGUE 3/4 | DRAIN TUBE 3/4 | 6003010326 | 6003010326 | 6003010326 |
| 14 | REJILLA CUADRO MANDOS | CONTROL PANEL GRILLE | M177010124 | M177010124 | M177010124 |
| 15 | TERMOSTATO | THERMOSTAT | 6021350129 | 6021350129 | 6021350129 |
| | SONDA | PROBE | 6021350083 | 6021350083 | 6021350083 |
| 16 | PUERTA MCB | DOOR MCB | M169010195 | M169010195 | M169010195 |
| 17 | BURLETE | SEAL | 6045010120 | 6045010120 | 6045010120 |
| 18 | SOP. BISAGRA INF. IZQ. | LOWER LEFT HINGE SUPPORT | 6033010098 | 6033010098 | 6033010098 |
| 19 | BISAGRA DE TORSIÓN | TORSION HINGE | 6033010100 | 6033010100 | 6033010100 |
| 20 | CAJA ALOJAMIENTO MUELLE | HINGE PIN SUPPORT | 6003010136 | 6003010136 | 6003010136 |
| 21 | EJE PUERTA | SPLINDE DOOR | 6033090162 | 6033090064 | 6033090064 |
| 22 | CREMALLERA RESPALDO | BACK SHELF RACK | M109011567 | M109011567 | M109011567 |
| | CREMALLERA RESPALDO LADO GRUPO | MOTOR SIDE BACK SHELF RACK | M109051344 | M109051344 | M109051344 |
| 23 | CREMALLERA MARCO | FRONT SHELF RACK | M109011565 | M109011565 | M109011565 |
| 24 | GUÍA "U" 562mm | SLIDE "U" 562mm | 6033050015 | 6033050027 | 6033050027 |
| 25 | PARRILLA | SHELF | 6027010003 | 6027010003 | 6027010003 |
| 26 | MICRORRUPTOR CONMUTADO | COMMUTATOR SWITCH | 6021130047 | 6021130047 | 6021130047 |
| 27 | RESISTENCIA EVAPORADOR | EVAPORATOR RESISTANCE | 6021250107 | 6021250107 | 6021250107 |
| 28 | RESISTENCIA DESAGUE EVAP. | DRAIN RESISTANCE EVAPORATOR | 6021250011 | 6021250011 | 6021250011 |
| 29 | RESISTENCIA MARCO | FRAME FRONT RESISTANCE | 6021250003 | 6021250003 | 6021250003 |
| | RESISTENCIA MARCO | FRAME FRONT RESISTANCE | 6021250004 | 6021250004 | 6021250004 |



Gas R290

| Nº | DESCRIPCIÓN | DESCRIPTION | MCB-C |
|----|--------------------------------------|----------------------------------|------------|
| 30 | CAJÓN COMPLETO 1/3 | COMPLETE DRAWER 1/3 | M169120401 |
| 31 | PUERTA CAJÓN COMPLETA 1/3 | DRAWER COMPLETE DOOR 1/3 | M169010214 |
| 32 | BURLETE CAJÓN 1/3 | DOOR SEAL 1/3 | 6045010121 |
| 33 | CUERPO CAJÓN 1/3 PROF. 100mm | DRAWER BODY 1/3 DEPTH 100mm | M109051106 |
| 34 | JUEGO DE GUÍAS 550mm | TELESCOPIC SLIDE 550mm | 6033050046 |
| 35 | JUEGO DE AUTO-CIERRE | SET OF CLOSED AUTOMATIC | 6033050048 |
| 36 | FRONTI ENTRE CAJONES COMPLETO | COMPLETE EXTERNAL SIDE | M161130007 |
| 37 | FIJACIÓN FRONTI HORIZONTAL | HORIZONTAL SUPPORT FRONT | 6003010456 |
| 38 | PERFIL EN U 344mm 90º FRONTI CAJONES | PROFILE U 344mm 90º DRAWERS SIDE | 6007170570 |
| 39 | CREMALLERA MARCO | FRONT SHELF RACK | M109011566 |
| 40 | CREMALLERA RESPALDO | BACK SHELF RACK | M109011567 |
| 41 | CREMALLERA RESPALDO LADO GRUPO | MOTOR SIDE BACK SHELF RACK | M109051344 |

