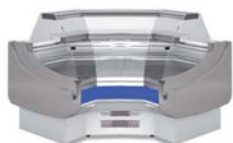




CVE-9-AP90-RC  
CVE-9-AP90-RCB  
CVEP-9-AP90-RC



CVE-9-AN90-RC  
CVE-9-AN90-RCB  
CVEP-9-AN90-RC



CVE-9-RP90-RC  
CVE-9-RP90-RCB  
CVEP-9-RP90-RC



CVE-9-RN90-RC  
CVE-9-RN90-RCB  
CVEP-9-RN90-RC

mod.	largo length (mm)	alto height (mm)	fondo depth (mm)	exposición display RSA (m <sup>2</sup> )	potencia frig. frig. power (W)	consumo consumption (W)	refrigerante refrigerant
CVE/CVEP-9-AN90-RCB/RC	1500	1100/1230/1310	1500	0,98	687	1125	R449A
CVE/CVEP-9-AP90-RCB/RC	1325	1100/1230/1310	1325	1,04	687	1125	R449A
CVE/CVEP-9N-AN45-RCB/RC	1090	1100/1230/1310	1060	0,48	-	-	-
CVE/CVEP-9N-AP45-RCB/RC	1040	1100/1230/1310	940	0,53	-	-	-
CVE/CVEP-9-RN90-RCB/RC	1352	1100/1230/1310	1352	1,01	687	1125	R449A
CVE/CVEP-9-RP90-RCB/RC	1335	1100/1230/1310	1335	1,32	687	1125	R449A
CMCVE-9-8-RC	800	910	940	-	-	-	-
CMCVE-9-12-RC	1200	910	940	-	-	-	-
CMCVE-9-AP90-RC	1670	910	690	-	-	-	-
CMCVE-9-AN90-RC	1638	910	825	-	-	-	-

OPCIONES  
OPTIONS



puerta plexi  
plexi door

cierre cortina  
night blind

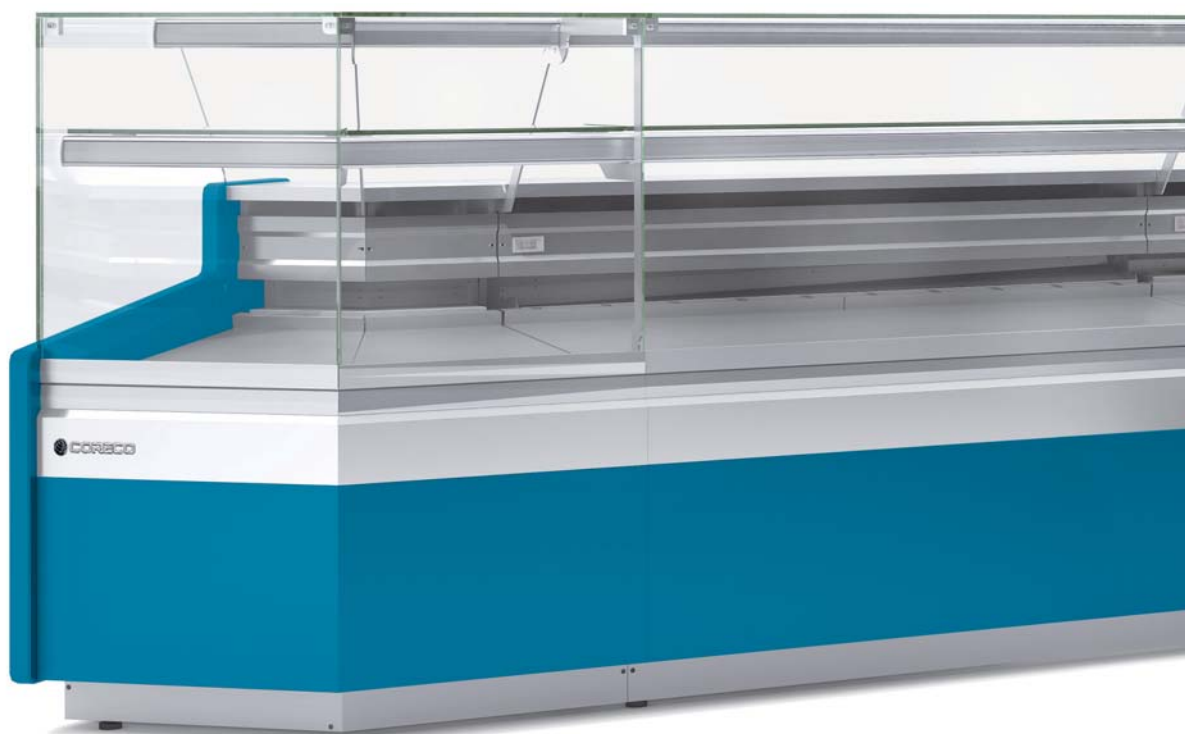
luz extra  
LED extra lighting

neutra  
neutral

pre-instalacion  
remote unit

- \_\_\_\_ CVE/CVEP-9-AN90-RCB/RC
- \_\_\_\_ CVE/CVEP-9-AP90-RCB/RC
- \_\_\_\_ CVE/CVEP-9-RN90-RCB/RC
- \_\_\_\_ CVE/CVEP-9-RP90-RCB/RC
- \_\_\_\_ CVE/CVEP-9N-AN45-RCB/RC
- \_\_\_\_ CVE/CVEP-9N-AP45-RCB/RC
- \_\_\_\_ CMCVE-9-8-RC
- \_\_\_\_ CMCVE-9-12-RC
- \_\_\_\_ CMCVE-9-AP90-RC
- \_\_\_\_ CMCVE-9-AN90-RC

SERVE OVER COUNTER • VITRINAS MODULARES



# Vitrina expositora modular serie-9 DELICATESSEN, con reserva Serve over counters modular line-9 DELICATESSEN, with cold storage

# 7

all photos must be considered as a reference - fotografías no contractuales

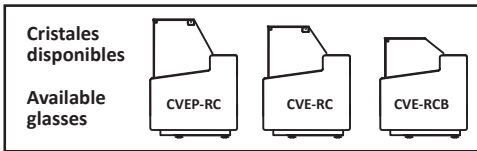


CVE-9N-RP45-RCB  
CVE-9N-RP45-RC  
CVEP-9N-RP45-RC

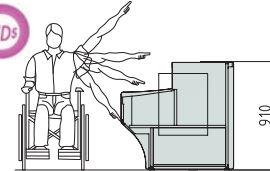
CVE-9N-RN45-RCB  
CVE-9N-RN45-RC  
CVEP-9N-RN45-RC

CMCVE-9-8-RC  
CMCVE-9-12-RC

CMCVE-9-RP90-RC  
CMCVE-9-RN90-RC



Consultar  
Consult



Altura adaptada  
adapted height

*características técnicas y constructivas sujetas a variación sin previo aviso*

- Exterior e interior en chapa de acero plastificada
- Plano exposición y encimera en acero inox AISI-304
- Bandejas plano de exposición lisas
- Costados de 40 mm en ABS inyectado excepto acabado madera
- Perfilera en aluminio anodizado
- Paragolpes en la parte delantera
- Cristal templado
- Aislamiento de poliuretano inyectado, densidad 40 Kg/m<sup>3</sup>, cero efectos ODP y GWP

#### AP90 / AN90 / RP90 / RN90

- Angulos refrigerados **sin reserva frigorífica**
- Compatibles con módulos CVE-RC CVE-RCB CVEP-RC
- **Evaporador ventilado**, con tratamiento EPOXY anti-corrosión de serie
- Condensación ventilada
- Control electrónico de temperatura
- Indicador de temperatura
- Descarche automático
- Evaporación automática de serie
- Clase climática 4 ( 30°C 55%) régimen M1 (-1/+5°C)

#### AP45 / AN45

- Angulos neutros
- Compatibles con módulos VE-RC CVE-RCB CVEP-RC

#### CMCVE

- Mueble caja con cajón, estante y enchufe (excepto en ángulos)
- Todas las decoraciones al mismo precio

*we reserve the right to change specifications whitout prior notice*

- Interior and exterior finish in plastic coated steel
- Display area and counter in stainless steel AISI-304
- Smooth deck for display area
- 40 mm sides in injected ABS, exceptd wood decor
- Anodised aluminium profiles
- Front rubber bumper
- Tempered glass
- 40 Kg/m<sup>2</sup> density polyurethane insulation, zero ODP and GWP

#### AP90 / AN90 / RP90 / RN90

- Refrigerated angles, without cooling storage area
- Compatibles with CVE-RC CVE-RCB CVEP-RC modules
- **Ventilated evaporator**, with anticorrosion EPOXY treated as standard
- Ventilated condensation
- Electronic temperature controller
- External thermometer
- Auto defrost
- Standard automatic evaporation
- Climate class 4 ( 30°C 55%) regime M1 (-1/+5°C)

#### AP45 / AN45

- Neutral angles
- Compatibles with VE-RC CVE-RCB CVEP-RC modules

#### CMCVE

- Cash counters with shelve, drawer and plug (except angles)
- All decorations included in price

