

CVE-10-AP90-RR
CVE-10-AP90-C
CVE-10-AP90-CC
CVES-10-AP90-RR
CVES-10-AP90-C
CVES-10-AP90-CC

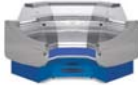

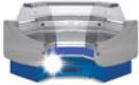
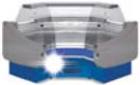
CVE-10-AN90-RR
CVE-10-AN90-C
CVE-10-AN90-CC
CVES-10-AN90-RR
CVES-10-AN90-C
CVES-10-AN90-CC

CVE-10-RP90-RR
CVE-10-RP90-C
CVES-10-RP90-RR
CVES-10-RP90-C

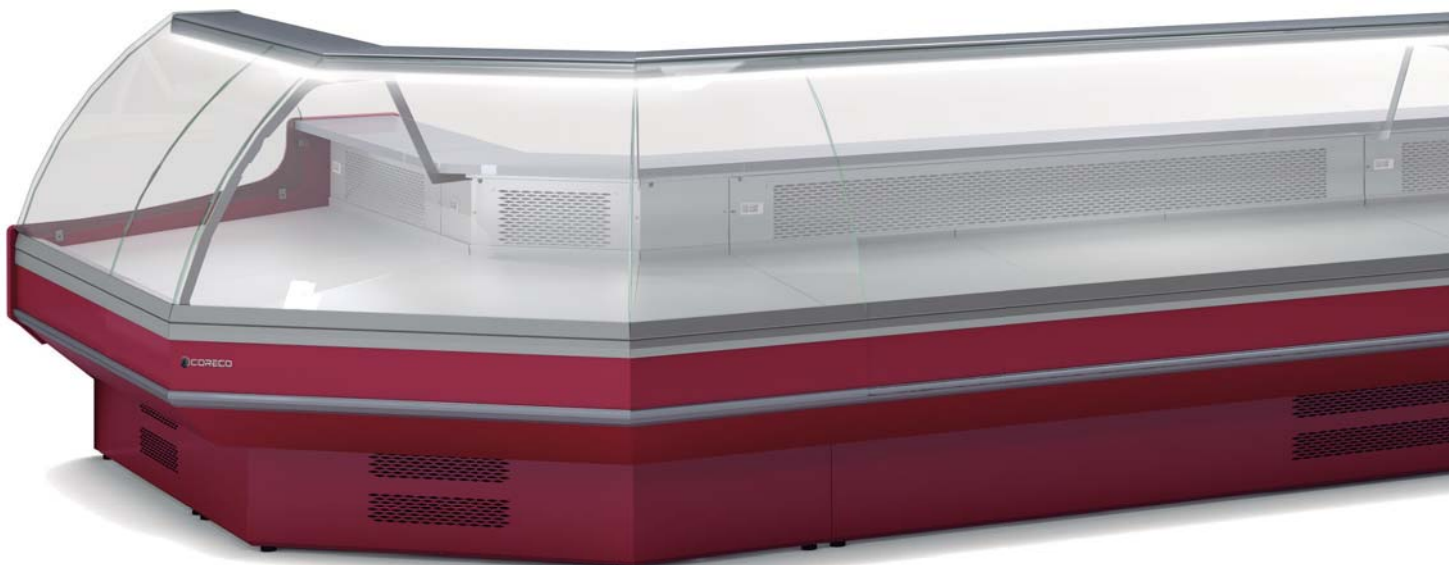
CVE-10-RN90-RR
CVE-10-RN90-C
CVES-10-RN90-RR
CVES-10-RN90-C

mod.	largo length (mm)	alto height (mm)	fondo depth (mm)	exposición display RSA (m <sup>2</sup> )	potencia frig. frig. power (W)	consumo consumption (W)	refrigerante refrigerant
CVE/CVES-10-AN90	1500	1230	1500	0,98	687	1125	R449A
CVE/CVES-10-AP90	1325	1230	1325	1,04	687	1125	R449A
CVE/CVES-10N-AN45	1090	1230	1060	0,48	-	-	-
CVE/CVES-10N-AP45	1040	1230	940	0,53	-	-	-
CVE/CVES-10-RN90	1352	1230	1352	1,01	687	1125	R449A
CVE/CVES-10-RP90	1335	1230	1335	1,32	687	1125	R449A
CMCVE-10-8	800	910	1100				
CMCVE-10-12	1200	910	1100				
CMCVE-10-AP90	1890	910	800				
CMCVE-10-AN90	1865	910	940				

SERVE OVER COUNTER • VITRINAS MODULARES

OPCIONES OPTIONS					puerta plexi plexi door	cierre cortina night blind	luz extra LED extra lighting	neutra neutral	pre-instalacion remote unit
---------------------	---	---	---	---	----------------------------	-------------------------------	---------------------------------	-------------------	--------------------------------

CVE/CVES-10-AN90
CVE/CVES-10-AP90
CVE/CVES-10-RN90
CVE/CVES-10-RP90
CVE/CVES-10N-AN45
CVE/CVES-10N-AP45
CMCVE-10-8
CMCVE-10-12
CMCVE-10-AP90
CMCVE-10-AN90



# Vitrina expositora modular serie 10 con y sin reserva

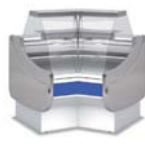
## Serve over counter modular line 10 with and without cold storage area

7

all photos must be considered as a reference - fotografías no contractuales



CVE-10N-AP45-RR  
 CVE-10N-AP45-C  
 CVE-10N-AP45-CC  
 CVES-10N-AP45-RR  
 CVES-10N-AP45-C  
 CVES-10N-AP45-CC



CVE-10N-AN45-RR  
 CVE-10N-AN45-C  
 CVE-10N-AN45-CC  
 CVES-10N-AN45-RR  
 CVES-10N-AN45-C  
 CVES-10N-AN45-CC



CMCVE-10-8  
 CMCVE-10-12

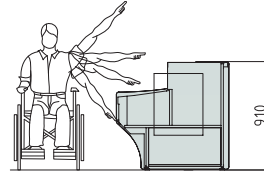


CMCVE-10-AP90  
 CMCVE-10-AN90



Consultar  
 Consult

características técnicas y constructivas sujetas a variación sin previa aviso



Altura adaptada  
 adapted height

we reserve the right to change specifications without prior notice

- Exterior e interior en chapa de acero plastificada
- Plano exposición y encimera en acero inox AISI-304
- Bandejas plano de exposición lisas
- Costados de 40 mm en ABS inyectado excepto acabado madera
- Perfilería en aluminio anodizado
- Paragolpes en la parte delantera
- Cristal templado
- Aislamiento de poliuretano inyectado, densidad 40 Kg/m<sup>3</sup>, cero efectos ODP y GWP

- Interior and exterior finish in plastic coated steel
- Display area and counter in stainless steel AISI-304
- Smooth deck for display area
- 40 mm sides in injected ABS, except wood decor
- Anodised aluminium profiles
- Front rubber bumper
- Tempered glass
- 40 Kg/m<sup>3</sup> density polyurethane insulation, zero ODP and GWP

### AP90 / AN90 / RP90 / RN90

- Angulos refrigerados **sin reserva frigorífica**
- Compatibles con módulos CVE-10 y CVES-10
- **Evaporador ventilado**, con tratamiento EPOXY anti-corrosión de serie
- Condensación ventilada
- Control electrónico de temperatura
- Indicador de temperatura
- Descarche automático
- Evaporación automática de serie
- Clase climática 4 ( 30°C 55%) régimen M1 (-1/+5°C)

### AP90 / AN90 / RP90 / RN90

- Refrigerated angles, without cooling storage area
- Compatibles with CVE-10 and CVES-10 modules
- **Ventilated evaporator**, with anticorrosion EPOXY treated as standard
- Ventilated condensation
- Electronic temperature controller
- External thermometer
- Auto defrost
- Standard automatic evaporation
- Climate class 4 ( 30°C 55%) regime M1 (-1/+5°C)

### AP45 / AN45

- Angulos neutros
- Compatibles con módulos CVE y CVES

### AP45 / AN45

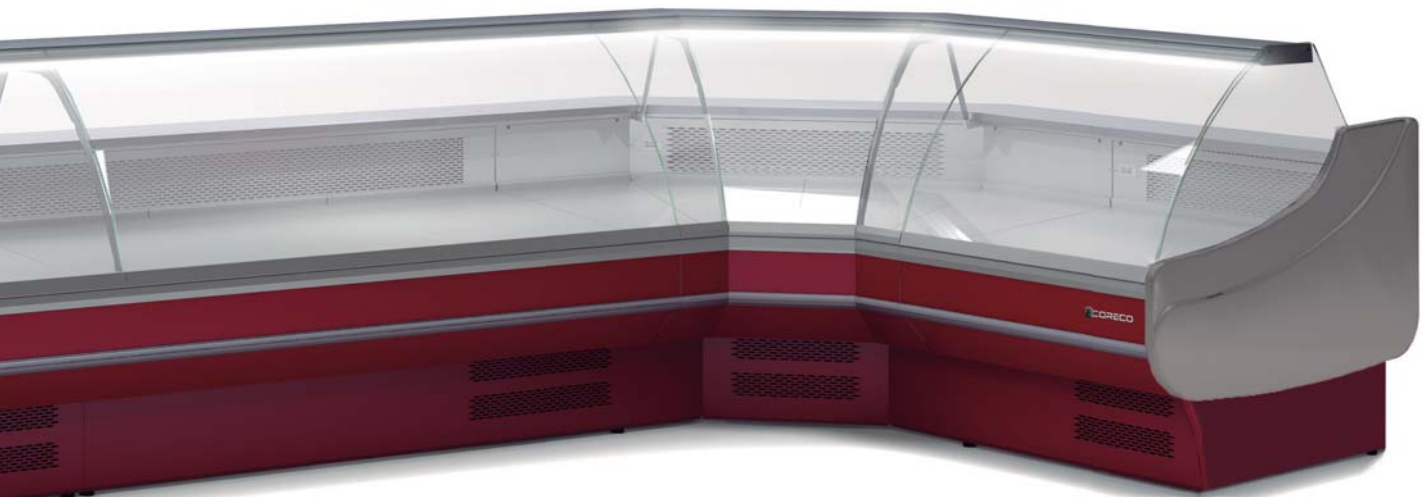
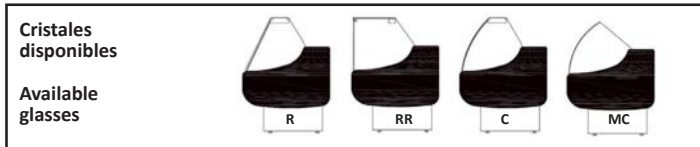
- Neutral angles
- Compatibles with CVE and CVES modules

### CMCVE

- Mueble caja con cajón, estante y enchufe (excepto en ángulos)
- Todas las decoraciones al mismo precio

### CMCVE

- Cash counters with shelves, drawer and plug (except angles)
- All decorations included in price



VITRINAS  
EXPOSITOAS