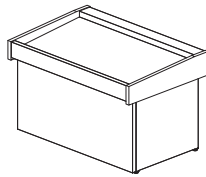
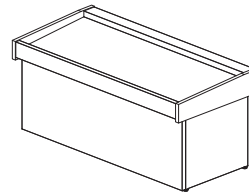


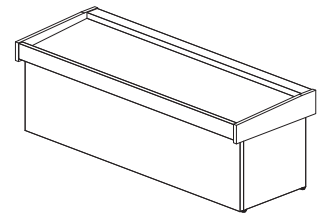
BFP-120



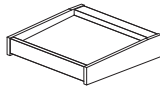
BFP-170



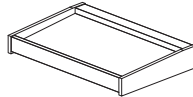
BFP-220



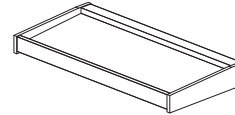
BFP-270



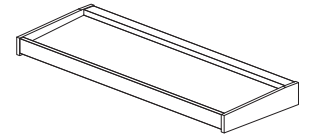
BFP-120-S



BFP-170-S



BFP-220-S



BFP-270-S

ref.	largo length (mm)	alto height (mm)	fondo depth (mm)	potencia frig. frig. power (W)	consumo consumption (W)	exposición display (m ²)	tensión monofásica single phase voltage	refrigerante refrigerant	rango range
BFP-120	1200	1000 / 925	950	550	600	0,96	230 V - 50 Hz	R-452A	0°C+2°C
BFP-170	1700	1000 / 925	950	675	670	1,40	230 V - 50 Hz	R-452A	0°C+2°C
BFP-220	2200	1000 / 925	950	930	850	1,84	230 V - 50 Hz	R-452A	0°C+2°C
BFP-270	2700	1000 / 925	950	1000	1100	2,30	230 V - 50 Hz	R-452A	0°C+2°C
BFP-120-S	1200	95	950	550		0,96			0°C+2°C
BFP-170-S	1700	95	950	675		1,40			0°C+2°C
BFP-220-S	2200	95	950	930		1,84			0°C+2°C
BFP-270-S	2700	95	950	1000		2,30			0°C+2°C

SUPERMARKET

Características técnicas y constructivas sujetas a variación sin previo aviso.

- Bandeja de exposición de acero inoxidable AISI 304.
- Chasis construido con tubo de acero inoxidable.
- Facilidad de limpieza total: Compartimento de equipo frigorífico hermético que permite la limpieza exterior del mueble con chorro de agua directo.
- Control electrónico de temperatura
- Espesor lateral costados: 40+40 mm
- Aislamiento de poliuretano inyectado, densidad 40 Kg/m³, cero efectos ODP y GWP
- BFP: chasis, placa fría, motor incorporado
- BFP-S: sin chasis, placa fría, pre-instalación, unidad condensadora incluida, 3 metros de tubería

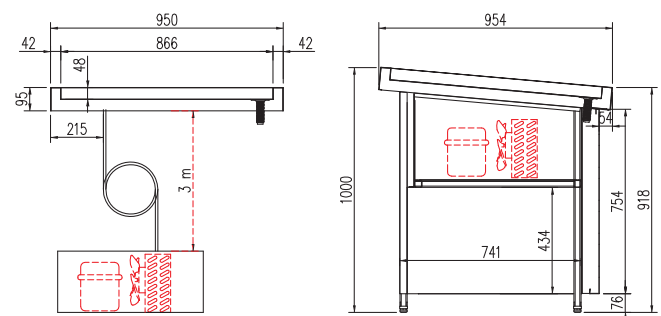
Recomendación: Canalización de agua de descarche desde desagüe hasta acometida de aguas.

We reserve the right to change specifications without prior notice.

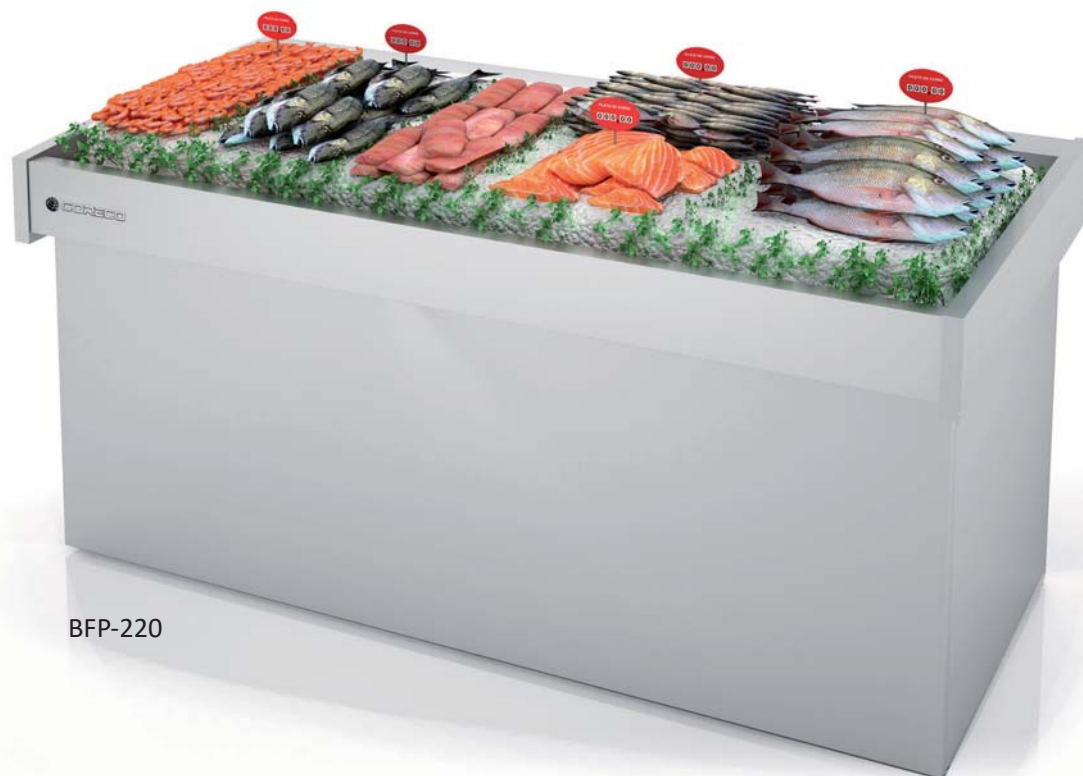
- Tray exhibition AISI 304.
- Chassis built with stainless steel tube.
- Easy cleanup: hermetic refrigeration equipment compartment which allows the external cleaning of the unit with direct water stream.
- Electronic temperature controller
- Lateral sides Thickness: 40 +40 mm
- Aislamiento de poliuretano inyectado, densidad 40 Kg/m³, cero efectos ODP y GWP
- BFP: chassis, refrigerated tray exhibition with condenser unit
- BFP-S: no chassis, refrigerated tray exhibition, ready for remote condenser unit (included, 3 meters tube)

Recommendation: Channeling defrost water from draining until water supplying.

OPCIONES - OPTIONS	120	170	220	270
perímetro acristalado <i>perimetral glass</i>				
largos especiales <i>customized lengths</i>				
230v 60Hz / 115v 60Hz				



all photos must be considered as a reference - fotografías no contractuales



BFP-220



BFP-120
perímetro acristalado opcional
optional perimeter glass