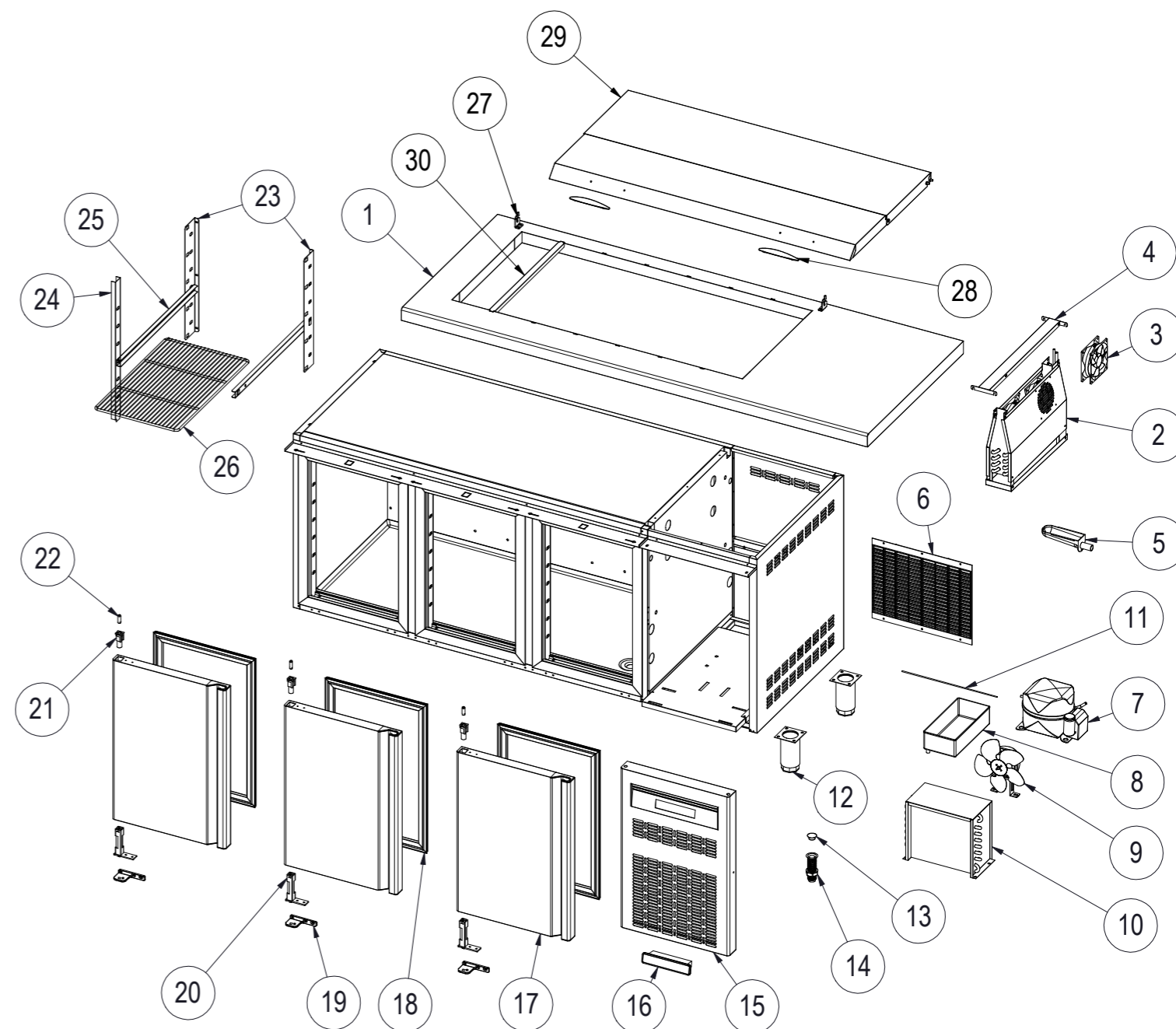


| Nº | DESCRIPCIÓN | DESCRIPTION | MFE-150 | MFE-200 |
|----|----------------------------|-------------------------------|------------|------------|
| 1 | ENCIMERA | WORKTOP | M181010845 | M181010846 |
| 2 | EVAPORADOR MFE | EVAPORATOR MFE | 6029010218 | 6029010218 |
| 3 | VENTILADOR EVAPORADOR | EVAPORATOR FAN | 6021050006 | 6021050006 |
| 4 | TAPA EVAPORADOR | EVAPORATOR COVER | M109051153 | M109051153 |
| 5 | DESAGUE CANALIZADOR | DRAIN CANAL | 6003010184 | 6003010184 |
| 6 | REJILLA TRASERA MOTOR | REAR VENTILATION GRILLE | 6003010181 | 6003010181 |
| 7 | COMPRESOR MFE | COMPRESSOR MFE | 6021010226 | 6021010236 |
| 8 | BANDEJA EVAP. AUTOM. | AUTOMATIC EVAP. TRAY | 6033090152 | 6003010023 |
| 9 | VENTILADOR CONDENSADOR MFE | CONDENSER FAN MFE | 6021050119 | 6021050126 |
| | ASPA VENT. DEL COND. MFE | CONDENSER FAN BLADE MFK70 | 6021050043 | 6021050094 |
| 10 | CONDENSADOR MFE | CONDENSER MFE | 6029020008 | 6029020002 |
| 11 | RESISTENCIA CARTUCHO | CARTRIDGE RESISTANCE | 212500047 | - |
| 12 | PATA REGULABLE | ADJUSTABLE FEET | 6007050017 | 6007050017 |
| 13 | TAPÓN DESAGUE 3/4 | DRAIN CAP 3/4 | 6003010262 | 6003010262 |
| 14 | DESAGUE 3/4 | DRAIN TUBE 3/4 | 6003010326 | 6003010326 |
| 15 | REJILLA CUADRO MANDOS | CONTROL PANEL GRILLE | M177010087 | M177010087 |
| 16 | TERMOSTATO | THERMOSTAT | 6021350114 | 6021350114 |
| | SONDA | PROBE | 6021350083 | 6021350083 |
| 17 | PUERTA MFE | DOOR MFE | M169010084 | M169010084 |
| 18 | BURLETE | SEAL | 6045010119 | 6045010119 |
| 19 | SOP. BISAGRA INF. IZQ. | LOWER LEFT HINGE SUPPORT | 6033010098 | 6033010098 |
| 20 | BISAGRA DE TORSIÓN | TORSION HINGE | 6033010100 | 6033010100 |
| 21 | CAJA ALOJAMIENTO MUELLE | HINGE PIN SUPPORT | 6003010136 | 6003010136 |
| 22 | EJE PUERTA | SPLINDE DOOR | 6033090064 | 6033090064 |
| 23 | CREMALLERA RESPALDO | BACK SHELF RACK | M109051138 | M109051138 |
| 24 | CREMALLERA MARCO | FRONT SHELF RACK | M109051135 | M109051135 |
| 25 | JUEGO DE GUÍAS "U" 562mm | SET OF SHELF SLIDES "U" 562mm | 6033050027 | 6033050027 |
| 26 | PARRILLA | SHELF | 6027010003 | 6027010003 |
| 27 | KIT HERRAJE | CONTAINER COVER KIT | 6033110003 | 6033110003 |
| 28 | TIRADOR INOX | INOX HANDLE | 6033010130 | 6033010130 |
| 29 | TAPACUBETA COMPLETA | COMPLETE TRAY COVER | M181090029 | M181090030 |
| 30 | PERFIL DIVISORIO | DIVIDING PROFILE | M109011005 | M109011005 |

Gas R290



| Nº | DESCRIPCIÓN | DESCRIPTION | MFE-150 | MFE-200 |
|-----|----------------------------|-------------------------|------------|------------|
| 2* | EVAPORADOR MFE | EVAPORATOR MFE | 6029010218 | 6029010218 |
| 7* | COMPRESOR MFE | COMPRESSOR MFE | 6021010184 | 6021010142 |
| 9* | VENTILADOR CONDENSADOR MFE | CONDENSER FAN MFE | 6021050106 | 6021050106 |
| | ASPA VENT. DEL COND. MFE | CONDENSER FAN BLADE MFE | 6021050080 | 6021050080 |
| 10* | CONDENSADOR MFE | CONDENSER MFE | 6029020002 | 6029020003 |

*Gas opcional R-134a (Optional gas R-134a)